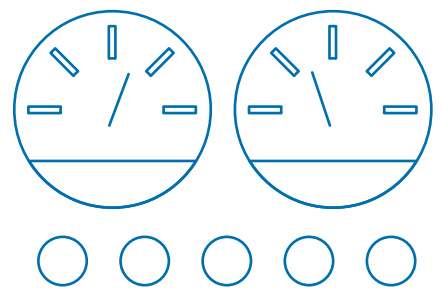


Digital and analogue  **MCE**
ELECTRONICS

electronic control panels





ELECTRONIC CONTROL PANELS FOR VARIOUS APPLICATIONS

Wide range of dashboard electronic panels for farming, earth-moving and industrial equipment as well as other applications, used to control the equipment's main functions such as: engine RPM, fuel level, engine oil temperature and pressure, operating hours, etc.

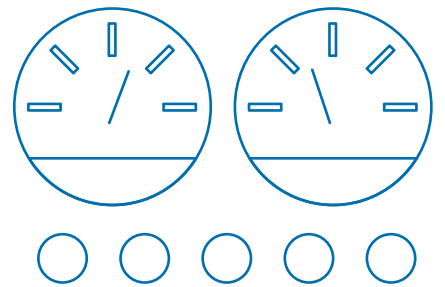
Monitoring is carried out by using LEDs and analogue/digital indicators (LCD). A wide series range is available. In compliance with the SAE J 1939 regulation, most units operate with CAN-BUS data transmission systems.

Customized graphic and operating options are available.





2200 Design series

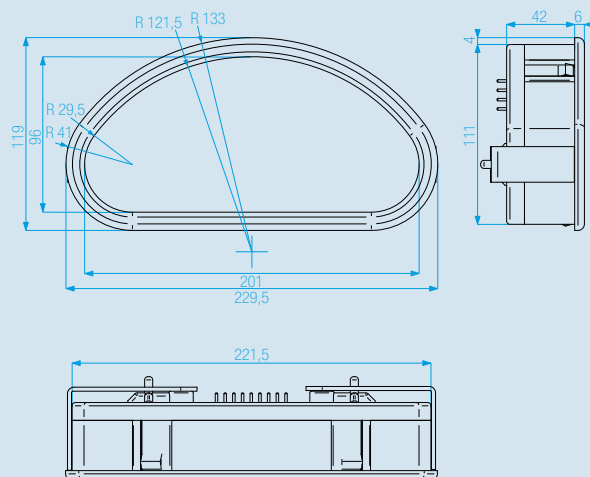




2200 Design series

TECHNICAL SPECIFICATIONS

Power supply voltage	12/24 Vdc
Max. current absorption	0,3 ÷ 0,6 A
Operating temperature	-20° +70° C
Storing temperature	-25° +85° C
Protection rating	IP64
Mechanic resistance	2 g
Dimensions	229,5 x 119 x 42 mm
Housing material	Black ABS
Hole for application	222 x 112 mm



3 DIG_1 LCD_21 SP digital

FEATURES

Numeric LCD display	1
Analogue LCD indicator	2+1
Negative/positive programmable LED indicators	21
Buzzer output	1

DISPLAYED VALUE READINGS

Engine RPM	•
Working hours	•
Fuel level	•
Engine water temperature	•
Scheduled maintenance	•
Speed in km/h (optional)	•



3 AN_1 LCD_21 SP analogue

FEATURES

Numeric LCD display	1
Analogue LCD indicator	2+1
Negative/positive programmable LED indicators	21
Buzzer output	1

DISPLAYED VALUE READINGS

Engine RPM	•
Working hours	•
Fuel level	•
Engine water temperature	•
Scheduled maintenance	•

2 DIG_1 GR_21 SP digital

FEATURES

Graphic LCD display 128x64	1
Analogue LCD indicator	2
Negative/positive programmable LED indicators	21
Buzzer output	1

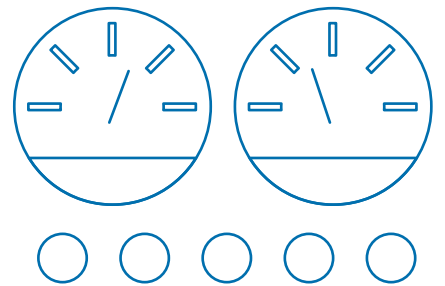
DISPLAYED VALUE READINGS

Engine RPM	•
Working hours	•
Fuel level	•
Engine water temperature	•
Scheduled maintenance	•





1100 Design series

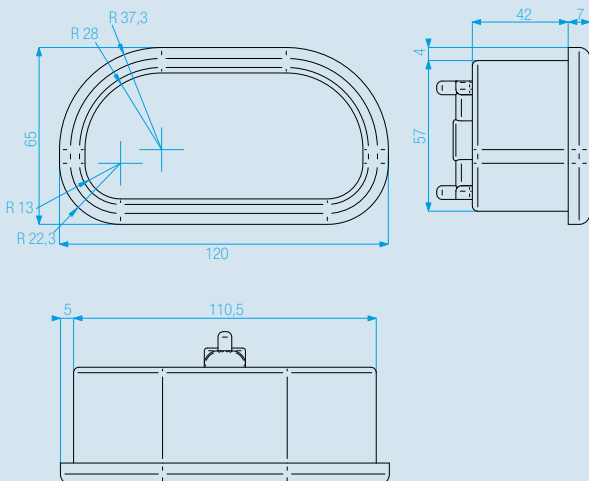




1100 Design series

TECHNICAL SPECIFICATIONS

Power supply voltage	12/24 Vdc
Max. current absorption	0,3 ÷ 0,6 A
Operating temperature	-20° +70° C
Storing temperature	-25° +85° C
Protection rating	IP64
Mechanic resistance	2 g
Dimensions	120 x 65 x 42 mm
Housing material	black ABS
Hole for application	111,5 x 58,5 mm



1 AN_10 SP analogue

FEATURES

Analogue indicator with Stepper Motor	1
Negative/positive programmable LED indicators	10
Buzzer output	1

DISPLAYED VALUE READINGS

Engine RPM	•
Speed in Km/h (optional)	•



1 DIG_1 LCD_10 SP digital

FEATURES

Numeric LCD display	1
Analogue LCD indicator	1
Negative/positive programmable LED indicators	10
Buzzer output	1

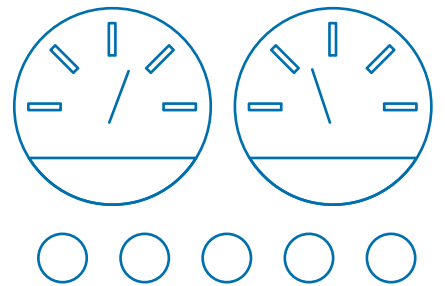
DISPLAYED VALUE READINGS

Engine RPM	•
Scheduled maintenance	•
Working hours	•
Speed in km/h (optional)	•





Ø 100 Round series





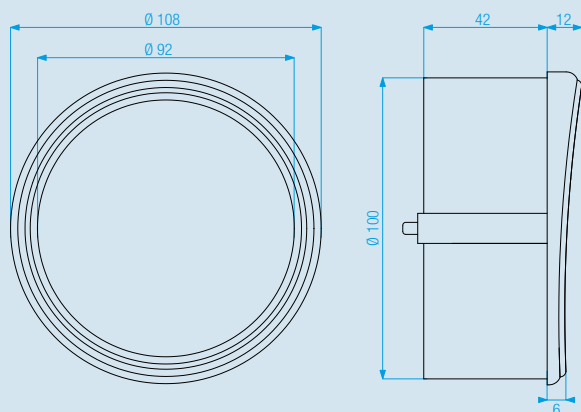
**BICOLORED
FRAME**

**D O U B L E
ANTI-FOG GLASS**

Ø 100 Round series

TECHNICAL SPECIFICATIONS

Power supply voltage	12/24 Vdc
Max. current absorption	0,3÷0,6 A
Operating temperature	-20° +70° C
Storing temperature	-25° +85° C
Protection rating	IP67
Mechanic resistance	2 g
Dimensions	Ø 108 x 41 mm
Housing material	ABS
Hole for application	Ø 101 mm
Anti-fog front panel	internal: clear polycarbonate external: anti-glare glass



Ø 100T_1LCD_10 SP

FEATURES

Numeric LCD display	1
Bargraph indicator	2
Positive LED indicators	3
Negative LED indicators	5
Programmable LED indicators	2
External keys	2
Buzzer output	1

DISPLAYED VALUE READINGS

Engine RPM	•
Working hours	•
Speed in km/h	•
Fuel level	•
Engine water temperature	•

Frames are available in 4 colors:



OTHER MODELS ON REQUEST



Ø 100T_Speedometer

FEATURES

Numeric LCD display	1
Analogue LCD indicator	1

DISPLAYED VALUE READINGS

Speed in km/h	•
Working hours	•

Ø 100T_RPM Counter

FEATURES

Numeric LCD display	1
Analogue LCD indicator	1

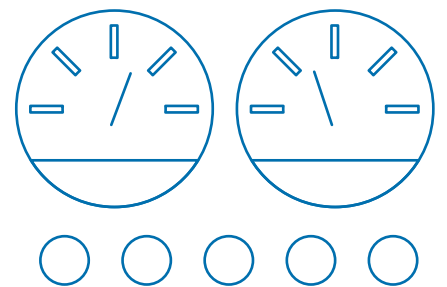
DISPLAYED VALUE READINGS

Engine RPM	•
Working hours	•





Ø 80 Round series





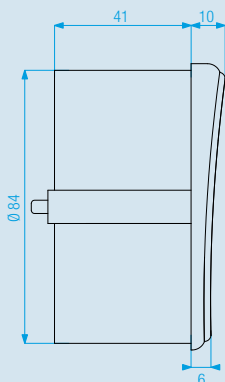
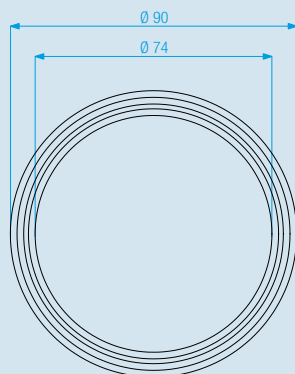
**BICOLOR
FRAME**

**DOUBLE
ANTI-FOG GLASS**

Ø 80 Round series

TECHNICAL SPECIFICATIONS

Power supply voltage	12/24 Vdc
Max. current absorption	0,3 ÷ 0,6 A
Operating temperature	-20° +70° C
Storing temperature	-25° +85° C
Protection rating	IP67
Mechanic resistance	2 g
Dimensions	Ø 90 x 41 mm
Housing material	ABS
Hole for application	Ø 85 mm
Anti-fog front panel	internal: clear polycarbonate external: anti-glare glass



Ø 80T_1LCD_8 SP

FEATURES

Numeric LCD display	1
Analogue indicator with Stepper Motor	1
Negative/positive programmable LED indicators	8
Keys	3
Buzzer output	1

DISPLAYED VALUE READINGS

Fuel level	•
Engine water temperature	•
Working hours	•
Scheduled maintenance	•
Speed in km/h	•

Frames are available in 4 colors:



OTHER MODELS ON REQUEST



Ø 80T_Speedometer

FEATURES

Numeric LCD display	1
Analogue LCD indicator	1

DISPLAYED VALUE READINGS

Speed in km/h	•
Distance covered in km	•

Ø 80T_RPM + hour counter

FEATURES

Numeric LCD display	1
Analogue LCD indicator	1

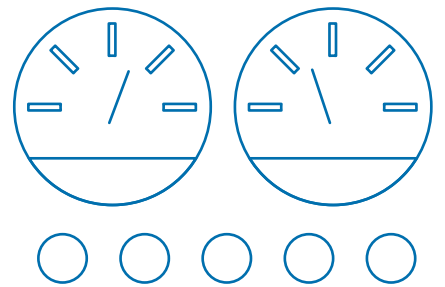
DISPLAYED VALUE READINGS

Engine RPM	•
Working hours	•





Ø 52 Round series





**B I C O L O R
F R A M E**



LCD fuel level



LCD engine water temperature



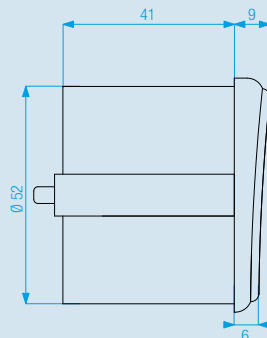
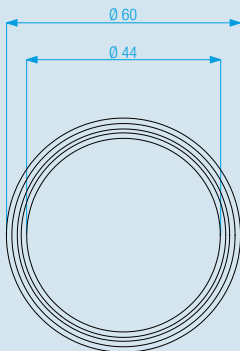
LCD engine oil pressure

**D O U B L E
A N T I - F O G G L A S S**

Ø 52 round series

TECHNICAL SPECIFICATIONS

Power supply voltage	12/24 Vdc
Max. current absorption	0,3 ÷ 0,6 A
Operating temperature	-20° +70° C
Storing temperature	-25° +85° C
Protection rating	IP67
Mechanic resistance	2 g
Dimensions	Ø 60 x 41 mm
Housing material	ABS
Hole for application	Ø 53 mm
Anti-fog front panel	internal: clear polycarbonate external: anti-glare glass
LCD analogue indicator	1



DISPLAYED VALUE READINGS

- Fuel level
- Engine water temperature
- Engine oil pressure

CUSTOMIZED DASHBOARDS ON REQUEST

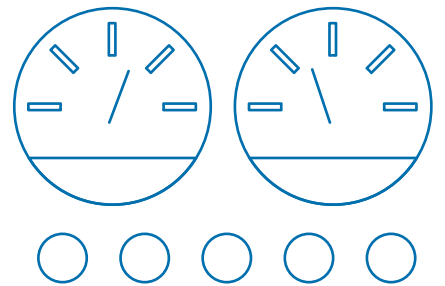
Frames are available in 4 colors:



OTHER MODELS ON REQUEST



2900 Design series

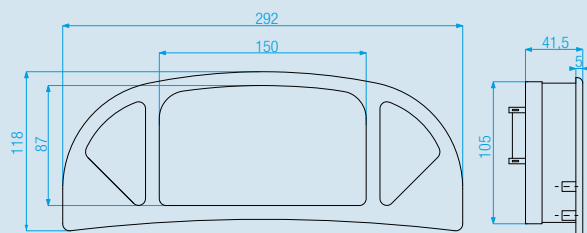




2900 Design series

TECHNICAL SPECIFICATIONS

Power supply voltage	12 Vdc
Max. current absorption	0,3 ÷ 0,6 A
Operating temperature	-20° +70° C
Storing temperature	-25° +85° C
Protection rating	IP56
Mechanic resistance	2 g
Dimensions	292 x 118 x 41,5 mm
Housing material	nylon
Hole for application	167,5 x 106,5 mm
Numeric LCD display	1
Bargraph analogue indicators	4
Positive LED indicators	7
Negative LED indicators	7
Soft touch keys	3
Buzzer output	1



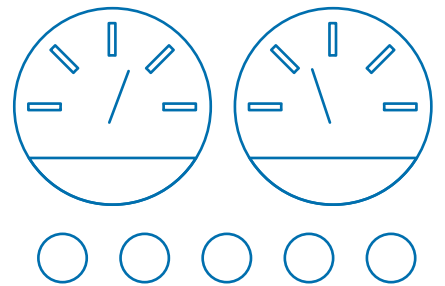
5 LCD_14 SP_3 TS

DISPLAYED VALUE READINGS

Engine RPM	•
Maintenance hours	•
Engine oil pressure	•
Engine water temperature	•
Fuel level	•
Battery charge	•
LED indicators	•



3700 Design series

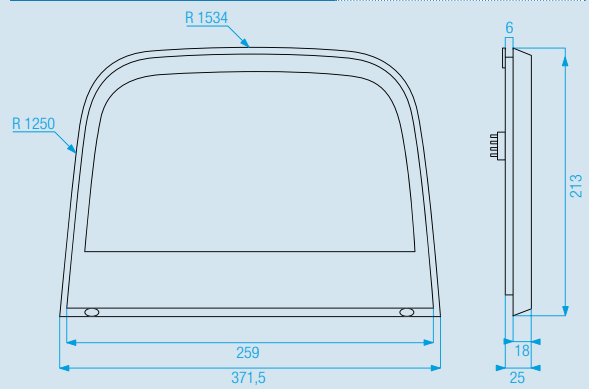




3700 Design series

TECHNICAL SPECIFICATIONS

Power supply voltage	10 ÷ 16 Vdc
Max. current absorption	0,7 A
Operating temperature	-20° +70° C
Storing temperature	-25° +85° C
Protection rating	IP66
Mechanic resistance	2 g
Dimensions	371,5 x 213 mm
Housing material	polimetacrilato
Hole for application	340 x 172 x 25 mm
Numeric LCD display	1
Analogue LCD indicators	4+1
Positive LED indicators	10
Negative LED indicators	9
Soft touch keys	6
Buzzer output	1



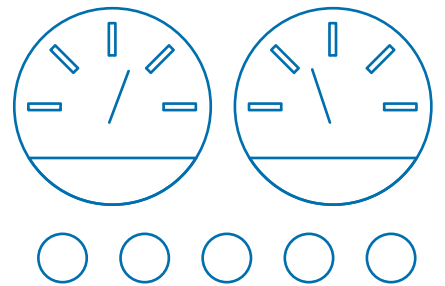
6 LCD_19 SP_6 TS

DISPLAYED VALUE READINGS

- Total and partial working hours
- Engine RPM
- PTO RPM
- Speed in Km/h
- Coolant temperature
- Fuel level
- Battery level
- LED indicators



2500 Square series

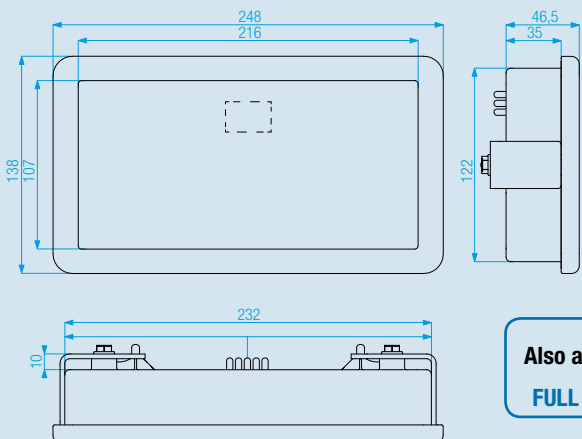




2500 Square series

TECHNICAL SPECIFICATIONS

Power supply voltage	12/24 Vdc
Max. current absorption	0,3 ÷ 0,6 A
Operating temperature	-20° +70° C
Storing temperature	-25° +85° C
Protection rating	IP64
Mechanic resistance	2 g
Dimensions	248 x 138 x 46,5 mm
Housing material	ABS
Hole for application	234,5 x 124,5 mm



Also available in
FULL CAN-BUS

5 LCD_14 SP

FEATURES

Numeric LCD display	1
Analogue LCD displays	4+1
Positive LED indicators	5
Negative LED indicators	9
Buzzer output	1

DISPLAYED VALUE READINGS

Engine RPM	•
Total working hours	•
Fuel level	•
Engine water temperature	•
Hydraulic oil temperature	•
Engine oil pressure	•
LED indicators for main alarms	•



5 LCD

FEATURES

Analogue LCD displays	5
Buzzer output	1

DISPLAYED VALUE READINGS

Engine oil pressure	•
Fuel level	•
Engine water temperature	•
Converter pressure	•
Converter temperature	•
Main alarms	•

3 LCD_14 SP

FEATURES

Numeric LCD display	1
Analogue LCD displays	2+1
Positive LED indicators	4
Negative LED indicators	10
Buzzer output	1

DISPLAYED VALUE READINGS

Engine water temperature	•
Fuel level	•
Engine RPM	•
Engine working hours	•





3 LCD_20 SP

FEATURES

Numeric LCD display	1
Analogue LCD indicators	2+1
Positive LED indicators	9
Negative LED indicators	5
CAN-BUS LED indicators	6
Buzzer output	1

DISPLAYED VALUE READINGS

Engine RPM	•
Engine working hours	•
Error messages from the CAN-BUS module	•
Fuel level	•
Engine water temperature	•

4 LCD_9 SP

FEATURES

Numeric 5-digit LCD display	1
Analogue LCD indicators	3+1
CAN-BUS LED indicators	9
Buzzer output	1

DISPLAYED VALUE READINGS

Engine RPM	•
Engine working hours	•
Fuel level	•
Engine water temperature	•
Engine oil pressure	•
Main alarms	•



22 SP

FEATURES

Positive LED indicators	18
Negative LED indicators	4
Buzzer output	1

DISPLAYED VALUE READINGS

LED indicators	•
----------------	---

3 LCD_23 SP

FEATURES

Numeric LCD displays	3
Positive LED indicators	19
Negative LED indicators	4
Buzzer output	1

DISPLAYED VALUE READINGS

Pressure indication n° 1	•
Pressure indication n° 2	•
Pressure indication n° 3	•
Main alarms	•



3 LCD_18 SP

FEATURES

Numeric LCD displays	3
Programmable LED indicators	9
Negative LED indicators	9
Buzzer output	1

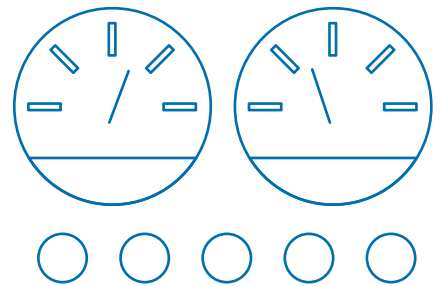
DISPLAYED VALUE READINGS

Pressure indication n° 1	•
Pressure indication n° 2	•
Pressure indication n° 3	•
Main alarms	•





2000 Square series

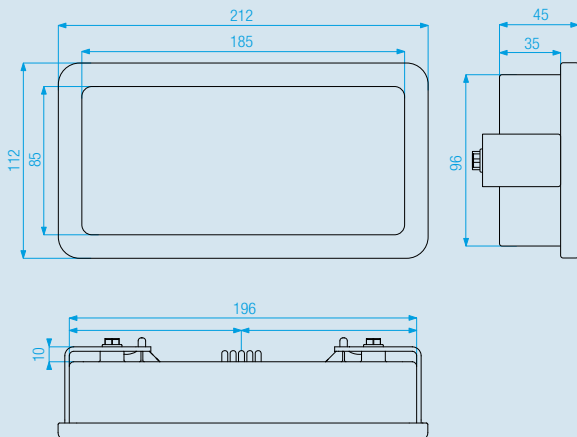




2000 Square series

TECHNICAL SPECIFICATIONS

Power supply voltage	12/24 Vdc
Max. current absorption	0,3 ÷ 0,6 A
Operating temperature	-20° +70° C
Storing temperature	-25° +85° C
Protection rating	IP64
Mechanic resistance	2 g
Dimensions	212 x 112 x 45 mm
Housing material	ABS
Hole for application	197,5 x 97,5 mm



5 LCD_14 SP

FEATURES

Numeric LCD display	1
Analogue LCD indicator	1
Positive LED indicators	7
Negative LED indicators	11

DISPLAYED VALUE READINGS

Engine RPM	•
Engine working hours	•
Speed in km/h	•
Speed in mph	•
Main alarms	•



2 LCD_9 SP

FEATURES

Numeric LCD displays	2
Analogue LCD indicator	1
Bargraph LCD indicators	3
Positive LED indicators	6
Negative LED indicators	3
Buzzer output	1

DISPLAYED VALUE READINGS

Hydraulic oil temperature	•
Engine oil temperature	•
Engine oil pressure	•
Fuel level	•
Engine RPM	•
Total working hours	•

3 LCD_12 SP

FEATURES

Numeric LCD displays	1
Analogue LCD indicators	2
Bargraph LCD indicators	3
Positive LED indicators	2
Negative LED indicators	2
Programmable LED indicators	8

DISPLAYED VALUE READINGS

Hydraulic oil temperature	•
Engine oil temperature	•
Engine oil pressure	•
Battery charge level	•
Fuel level	•
Engine RPM	•
Total working hours	•



3 LCD_10 SP

FEATURES

Numeric LCD display	1
Analogue LCD indicators	2+1
Positive LED indicators	3
Negative LED indicators	7
External keys (optional)	2

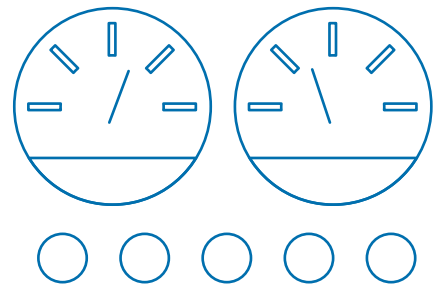
DISPLAYED VALUE READINGS

Engine RPM	•
Engine working hours	•
Fuel level	•
Engine water temperature	•
LED indicators for main alarms	•
Speed in km/h (optional)	•





1200 Square series

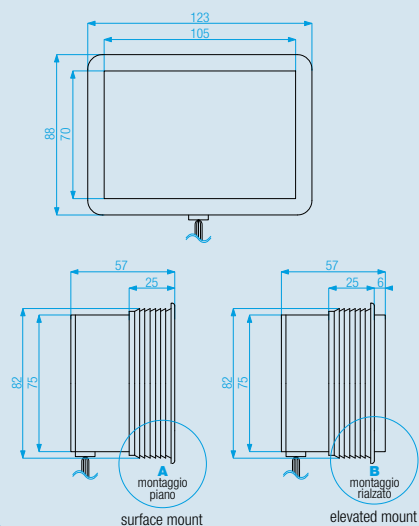




1200 Square series

TECHNICAL SPECIFICATIONS

Power supply voltage	12 Vdc
Max. current absorption	0,3 ÷ 0,6 A
Operating temperature	-20° +70° C
Storing temperature	-25° +85° C
Protection rating	IP56
Frame material	rubber
Mechanic resistance	2 g
Dimensions	123 x 88 x 57 mm
Housing material	nylon
Hole for application	118,5 x 80,5 mm



1 LCD_13 SP

FEATURES

Numeric LCD display	1
Analogue LCD indicator	1
Positive LED indicators	7
Negative LED indicators	11
Buzzer output	1

DISPLAYED VALUE READINGS

Engine RPM



1 LCD_12 SP_3 TS

FEATURES

Numeric LCD display	1
Positive LED indicators	6
Negative LED indicators	6
Soft keys with LED	3
Buzzer output	1

DISPLAYED VALUE READINGS

Engine RPM	•
Engine working hours	•
Total working hours	•
Total liters applied	•
Scheduled maintenance	•

2 LCD_2TS

FEATURES

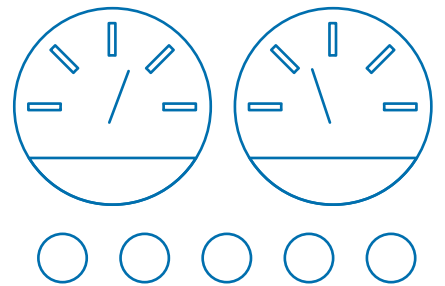
Numeric LCD displays	2
Soft keys with LED	2
Function LEDs	2

DISPLAYED VALUE READINGS

Speed in km/h	•
Engine RPM	•
PTO RPM	•
Engine working hours	•



1200 S Square series



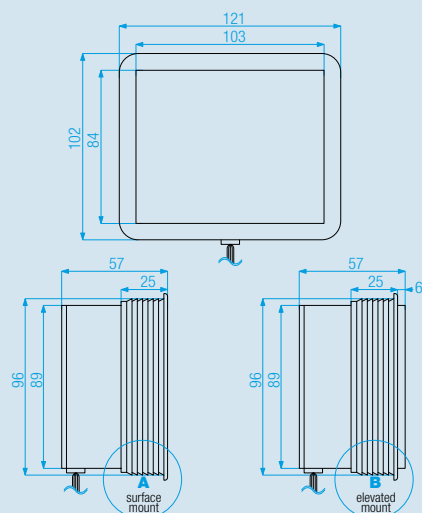
Panels_1200 S square series



1200 S Square series

TECHNICAL SPECIFICATIONS

Power supply voltage	12 Vdc
Max. current absorption	0,3 ÷ 0,6 A
Operating temperature	-20° +70° C
Storing temperature	-25° +85° C
Protection rating	IP56
Frame material	rubber
Mechanic resistance	2 g
Dimensions	121 x 102 x 57 mm
Housing material	nylon
Hole for application	113,5 x 94,5 mm



MVP_1GRF

FEATURES

Graphic display 128 x 64 pixel	1
Impulsive digital inputs	2
External keys (optional)	3
Buzzer output	1



MC 1207

FEATURES

Numeric LCD display	1
Horizontal bar analogue indicators	3
Soft keys	4
Buzzer output	1

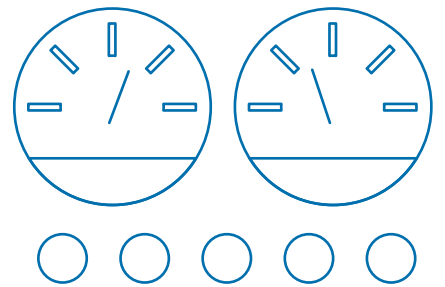
DISPLAYED VALUE READINGS

Settings	•
Working hours	•
Speed in km/h	•
Ha/h	•
Engine RPM	•
Fan RPM	•
threshing drum RPM	•
Total and partial Ha	•
head partitioning 4 sections (hectare counter function)	•
Fuel level	•
Engine water temperature	•
Engine oil pressure	•
Scheduled maintenance	•





1200 VP Square series

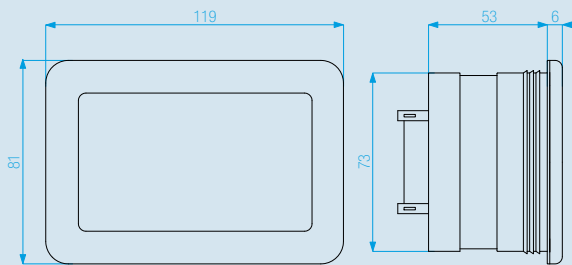




1200 VP Square series

TECHNICAL SPECIFICATIONS

Power supply voltage	12 Vdc
Max. current absorption	0,3 ÷ 0,6 A
Operating temperature	-20° +70° C
Storing temperature	-25° +85° C
Protection rating	IP56
Mechanic resistance	2 g
Dimensions	119 x 81 x 53 mm
Housing material	ABS
Hole for application	113,5 x 94,5 mm



1 LCD_5 SP

FEATURES

Numeric LCD display	1
Positive LED indicators	4
Negative LED indicator	1

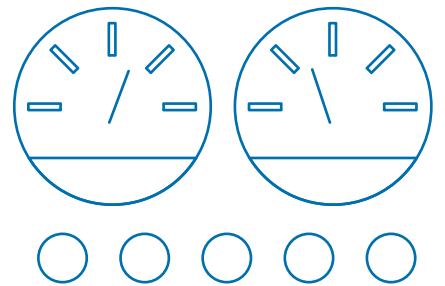
DISPLAYED VALUE READINGS

Speed in km/h or mph	•
LED indicators	•





1000 Square series

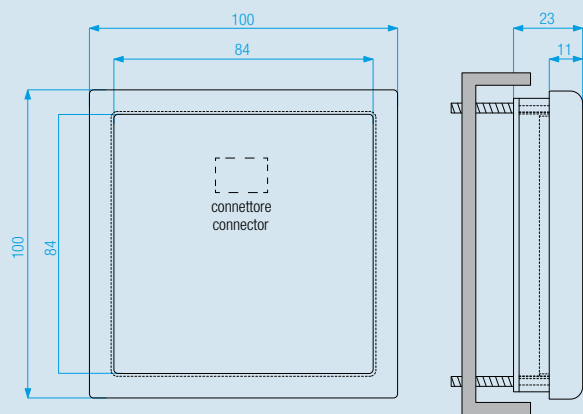




1000 Square series

TECHNICAL SPECIFICATIONS

Power supply voltage	12 Vdc
Max. current absorption	0,3 ÷ 0,6 A
Operating temperature	-20° +70° C
Storing temperature	-25° +85° C
Protection rating	IP62
Mechanic resistance	2 g
Dimensions	100 x 100 x 23 mm
Housing material	ABS
Hole for application	96,5 x 96,5 mm



1 LCD_8 SP

FEATURES

Numeric LCD display	1
Positive LED indicators	4
Negative LED indicators	4
Buzzer output	1

DISPLAYED VALUE READINGS

- Engine RPM
- Engine working hours





1 LCD_10 SP

FEATURES

Numeric LCD display	1
Analogue bargraph indicators	2
Positive LED indicators	3
Negative LED indicators	5
Programmable LED indicators	2
External keys (optional)	2
Buzzer output	1

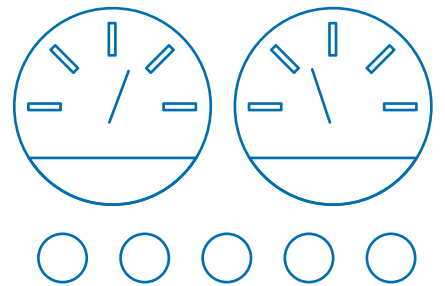
DISPLAYED VALUE READINGS

Engine RPM	•
Engine working hours	•
Fuel level	•
Engine water temperature	•
LED indicators	•
Speed in Km/h	•





500 Square series

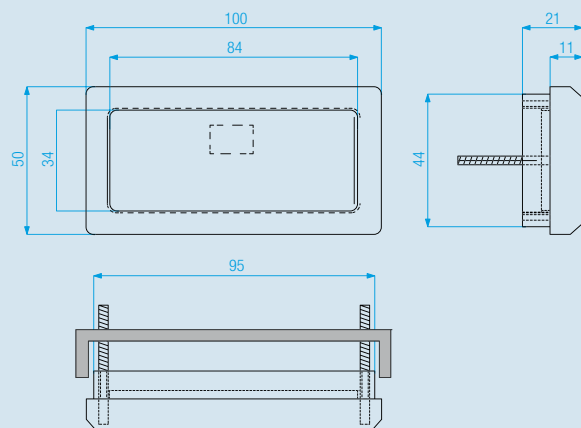




500 Square series

TECHNICAL SPECIFICATIONS

Power supply voltage	12/24 Vdc
Max. current absorption	0,3 ÷ 0,6 A
Operating temperature	-20° +70° C
Storing temperature	-25° +85° C
Protection rating	IP64 or IP67
Mechanic resistance	2 g
Dimensions	100 x 50 x 21 mm
Housing material	ABS
Hole for application	96,5 x 46,5 mm



1 LCD_10 SP

FEATURES

Numeric LCD display	1
Positive LED indicators	3
Negative LED indicators	5
Programmable LED indicators	2
External keys (optional)	2
Buzzer output	1

DISPLAYED VALUE READINGS

Engine RPM	•
Fuel level	•
Engine water temperature	•
LED indicators	•
Working hours	•
Speed in Km/h	•

Contacts



Switchboard Tel. +39 0425 754713
..... Fax +39 0425 741130
.....info@mcelettronica.it

Technical dept. / Development Tel. +39 0425 742986

Purchasing Tel. +39 0425 742028

Direction

Claudio Mantovani claudio@mcelettronica.it

Sales manager for Italy

Angelo Stefani angelo@mcelettronica.it

Export manager

Damiano Ghirardelli damiano@mcelettronica.it

Customer service

Barbara Guglielmo mcstaff@mcelettronica.it

Marianna Cappello mcstaff@mcelettronica.it

Technical dept. / Development

Giuseppe Chinaglia prog@mcelettronica.it

Damiano Bernardinello prog.damiano@mcelettronica.it

Nicola Baccaglioni prog.nicola@mcelettronica.it

Lauro Bizzo prog.lauro@mcelettronica.it

Marco Marangoni prog.marco@mcelettronica.it

Technical assistance

Cristian Mantovani prog@mcelettronica.it

Purchasing

Denis Pavanello for@mcelettronica.it

Administration & Accounting dept.

Stefania Bisi contab@mcelettronica.it

Antonella Liboni contab@mcelettronica.it



Via Enrico Fermi, 450/486 z.a.i.
45024 Fiesso Umbertiano (RO) Italy
Tel. +39 0425 754 713
Fax. +39 0425 741 130
E-mail: info@mcelettronica.it
www.mcelettronica.it

